



**BEITER**  
BUILD BETTER

PROFESSIONAL PRECISION TOOLS  
POWER TOOLS & HAND TOOLS

# PRODUCT CATALOG

**2022-2023**



Designed in USA

BEITER TECHNOLOGIES USA LLC BEITER INTERNATIONAL LIMITED

[www.beitertools.com](http://www.beitertools.com)



BEITER Precision Tools is originated from an inspiration and vision to modernize the home renovation experience by building better homes and better lives.

Beiter is a profound international brand of Woodwell Group, a 2-generation business over 40 years of experience in manufacturing and distributing professional construction tools. Beiter is based in California has launched off at numerous trade shows. Currently, Beiter serves the Americas, Europe, Asia, Australia and Middle East region.

The Beiter brand is originated from the German word "bauarbeiter", which means professional home builder. It aims to focus on users that from home improvement builders to professional contractors, to large scale construction projects.



**We provide both Beiter Standard package & OEM design package service.**



## BEITER

A proud family member of Wah Tat Woodwell Group. *Serving families from family since 1982.*

For two generations, we live by the values of:

### SUSTAINABILITY

IDEAS

TEAM WORK

PERSERVATION

LONGTERM VISION

FAMILY

### PARTNERSHIP

SYNERGY

### GLOBAL THINKING

HAPPINESS

QUALITY LIVING

### CHILDREN

EQUITY & INCLUSION

INNOVATION

FAIR OPPORTUNITY

### BUILD BETTER

Environmental  
Social  
Governance





## **BART-3DG PRO**

Beiter Signature 3D Laser Level



## **BART-3DGS**

The signature model accepts OEM design ,  
Please contact us for further information.



### Includes:



- Laser x1
- Li-ion Battery x1,
- Alkaline Battery Holder x1
- Charger x1
- LMP-MK Magnetic Wall Mount
- Target
- Hard Carrying Case
- Manual

## BART-3D PRO BART-3DG PRO

### 360° Self-leveling Tri-plane Green Laser Level



**Type C**  
Eco Design With Type C Charging



**STRONG**  
Aluminium Window Frame

### Technical Data

Working Range	Red Laser: 100ft (30m) Green Laser: 130ft (40m) 230ft (70m) Working Range with Receiver
Accuracy	±1/4 in @ 100 ft (2mm @ 10m)
Self-leveling Range	±4°
Laser Class/ Wavelength	Class II Red Line: 660nm Green Line: 532nm
Waterproof/ Dustproof	IP54
Power Supply	3.7V Li-ion Battery/ 4 X AA Batteries/ Type C Charger (AA Batteries Not Included In Some Countries)
Operating Temperature	14° F / -10° C ~ 104° F / 40° C
Incline Mode	Transport Lock & Individually Shiftable Function
Out-of-level-indication	Optical Signal And Audio Alert
Tripod Thread	1/4" & 5/8"



**NEW**  
LASER LEVELS



3 YEARS WARRANTY  
**1+2\***  
3 YEARS WARRANTY  
\*When register online within 30 days of purchase



**Includes:**

- Laser x1
- Li-ion Battery x1
- Type C USB
- LMP-MK Magnetic Wall Mount
- Hard Carrying Case

## TIGE-3DG

### 360° Self-leveling Tri-Plane Green Laser Level



Ultra Long Working Hour

### Technical Data

Working Range	Red Laser: 100ft (30m) Green Laser: 130ft(40m) 230ft (70m) Working Range with Receiver
Accuracy	±1/4 in @ 100 ft (2mm @ 10m)
Self-leveling Range	±3°
Laser Class/ Wavelength	Class II Red 3D: 660nm Green 3D: 532nm
Waterproof/ Dustproof	IP54
Power Supply	Li-ion Battery
Operating Temperature	14° F / -10° C ~ 104° F / 40° C
Incline Mode	Transport Lock & Individually Shiftable Function
Out-of-level-indication	Optical Signal And Audio Alert
Tripod Thread	1/4"



## LCG-021

Beiter Green Crossliner Pro



## LCG-031

Beiter Green Crossliner with 270° Wide Horizontal Laser Line



## LCG-041

Beiter Green Crossliner with 270° Wide Horizontal Laser Line and 2 Plumb Dots



### Includes:

- Laser x1
- Li-ion Battery x1
- Alkaline Battery Holder x1
- L-shaped Magnetic Wall Mount
- Type-C USB line
- Pouch bag



## Technical Data

Working Range	Green Laser:60ft(20m) 230ft (70m) Working Range with Receiver
Accuracy	±1/4 in @ 100 ft (2mm @ 10m)
Self-leveling Range	±3°
Laser Class/ Wavelength	Class II Green Line: 510-520nm Plumb dot:650nm
Waterproof/ Dustproof	IP54
Power Supply	3.7V Li-ion Battery/ 4 X AA Batteries/ Type C Charger (AA Batteries Not Included In Some Countries)
Operating Temperature	14° F / -10° C ~ 104° F / 40° C
Incline Mode	Transport Lock & Individually Shiftable Function
Out-of-level-indication	Optical Signal And Audio Alert
Tripod Thread	1/4"



## WAVE-3D1

360° Green Laser with Vertical Line

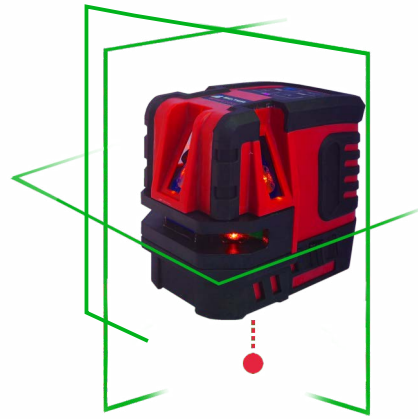
### Includes:

- Laser x1
- 3 X AA Batteries
- L-shaped Magnetic Wall Mount
- Type-C USB line
- Pouch bag

### Technical Data

Working Range	Green Laser:130ft(40m) 230ft (70m) Working Range with Receiver
Accuracy	±1/4 in @ 100 ft (2mm @ 10m)
Self-leveling Range	±3°
Laser Class/ Wavelength	Class II Green Line: 532nm
Waterproof/ Dustproof	IP54
Power Supply	3.7V Li-ion Battery/ 4 X AA Batteries/ Type C Charger (AA Batteries Not Included In Some Countries)
Operating Temperature	14° F / -10° C ~ 104° F / 40° C
Incline Mode	Transport Lock & Individually Shiftable Function
Out-of-level-indication	Optical Signal And Audio Alert
Tripod Thread	1/4"





### Includes:

- Laser x 1
- Rechargeable Battery x 1
- Battery Case for Alkaline Battery x 1
- Charger x 1
- LWP-MK Magnetic Wall Mount x 1
- Hard Carrying Case x 1

## WAVE-10G/WAVE-10 Green/Red Laser Lines

Wide Horizontal and Two Vertical Linear Laser  
with Plumb Dot

### Technical Data

Working Range	Red Laser: 32ft (10m) Green Laser: 60ft(20m) 230ft (70m) Working Range with Receiver
Accuracy	±1/4 in @ 100 ft (2mm @ 10m)
Self-leveling Range	±4°
Laser Class/ Wavelength	Class II Green Line: 510-520nm Red Line: 635nm Plumb Dot: 650nm
Waterproof/ Dustproof	IP54
Power Supply	3.7V Li-ion Battery/ 4 X AA Batteries/ DC Charger (AA Batteries Not Included In Some Countries)
Operating Temperature	14° F / -10° C ~ 104° F / 40° C
Incline Mode	Transport Lock & Individually Shiftable Function
Out-of-level-indication	Optical Signal And Audio Alert
Tripod Thread	1/4" & 5/8"



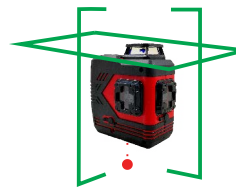
## BOX-CV2

Beiter 360° With 2 Crossline Laser - Red Beams



## BOX-CV2G

Beiter 360° With 2 Crossline Laser - Green Beams



### Technical Data

Working Range	Red Laser: 100ft (30m) Green Laser: 130ft(40m) 230ft (70m) Working Range with Receiver
Accuracy	±1/4 in @ 100 ft (2mm @ 10m)
Self-leveling Range	±4°
Wavelength	Red Laser: 635-638nm; Green Laser: 532nm
Waterproof/ Dustproof	IP54
Power Supply	3.7V Li-ion Battery/ 4 X AA Batteries/ DC Charger (AA Batteries Not Included In Some Countries)
Operating Temperature	14° F / -10° C ~ 104° F / 40° C
Incline Mode	Transport Lock & Individually Shiftable Function
Out-of-level-indication	Optical Signal And Audio Alert
Tripod Thread	1/4" & 5/8"



## BRUNO-XP

Self-leveling Crossline Red/Green Laser With Ceiling Point And Plumb Point



## BRUNO-XPG



## BRODY-X4P

Self-leveling 4-point Alignment Red/Green 2-in-1 Laser With 4 Points Plus A Cross-line Combo

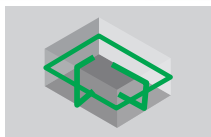
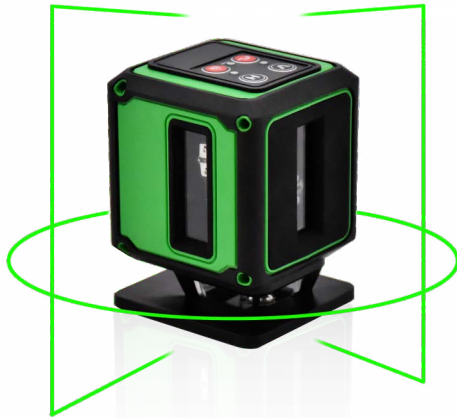


## BRODY-X4PG



### Technical Data

Working Range	Red Laser: 100 ft(30m) Indoor Green Laser:130 ft(40m) Indoor 230ft (70m) Working Range with Receiver
Accuracy	±1/4 in @ 100 ft (2mm @ 10m)
Self-leveling Range	±4°
Laser Class/ Wavelength	Class II Red Laser: 635nm For Line & Dots; Green Laser: 515nm For Line & Dots; 660nm For Plumb Point.
Waterproof/ Dustproof	IP54
Power Supply	3.7V Li-ion Battery/ 4 X AA Batteries/ DC Charger (AA Batteries Not Included In Some Countries)
Operating Temperature	14° F / -10° C ~ 104° F / 40° C
Incline Mode	Transport Lock & Individually Shiftable Function
Out-of-level-indication	Optical Signal And Audio Alert
Tripod Thread	1/4" & 5/8"



Two Vertical Lines  
One 360° Line (2 Crosslines)



## BAJ-CV2G

Professional Palm-sized  
Multi-Line Flooring Laser



FEATURES  
3 \* 360° Green Laser Lines

## BAJ-3DG

Professional Palm-sized  
3D Flooring Laser

- Small, Handy, Fast And Easy!**
- World's Most Compact Professional Green Laser with 360° X 3 Green Laser . Everyone's Must-have!
  - Extremely Bright.
  - Compatible with Laser Receiver. Working Range 70m
  - Designed Ideal for Flooring and Carpentry
  - Lock Function for Tilted Application

### Technical Data

Working Range	Green Laser: 100 ft (30m) Indoor 164ft (50m) Working Range with Receiver
Accuracy	±1/4 in @ 100 ft (2mm @ 10m)
Self-leveling Range	±3°
Laser Class/ Wavelength	Class II Green Line: 510-540nm Green Cone: 532/520nm
Waterproof/ Dustproof	IP54
Power Supply	3x AA x 1.5V, or Li-ion Battery DC Charger (Type-C USB Cable)
Operating Temperature	14° F / -10° C ~ 104° F / 40° C
Incline Mode	Transport Lock & Individually Shiftable Function
Out-of-level-indication	Optical Signal And Audio Alert
Tripod Thread	1/4"



**Palm-size**



**Includes:**

- Laser x1
- Rechargeable Li-ion Battery x1
- Remote Control
- Charger

## MC-3D/MC-4D

Compact 360° Self-leveling Tri-plane Green Laser Level

### Technical Data

Working Range	100ft(30m)
Accuracy	±1/4 in @ 100 ft (2mm @ 10m)
Self-leveling Range	±3°
Laser Class/ Wavelength	Class II/ 520nm
Waterproof/ Dustproof	IP54
Power Supply	Li-ion Battery
Operating Temperature	14° F / -10° C ~ 104° F / 40° C
Incline Mode	Transport Lock & Individually Shiftable Function
Out-of-level-indication	Optical Signal And Audio Alert
Tripod Thread	1/4"



## MX2D

## MX3D

## MX4D

360° Green Flooring Laser Family - 2D/ 3D/ 4D/ Ceiling or Flooring laser



### Includes:

- Laser x1
- Li-ion Battery x2
- Charger x1
- XYZ-axis Fine-tuning Base x1
- Elevating Flooring Base x1
- Special Ceiling Wall Mount x1
- Remote Control x1
- Hard Carrying Case x1

### Technical Data

Working Range	100 ft(30m)
Accuracy	±1mm/5m
Self-leveling Range	±4°
Wavelength	520nm
Waterproof/ Dustproof	IP54
Power Supply	Li-ion Battery
Operating Temperature	14° F / -10° C ~ 104° F / 40° C
Incline Mode	Transport Lock & Individually Shiftable Function
Out-of-level-indication	Optical Signal And Audio Alert
Tripod Thread	1/4"

A Wide Range of Professional and DIY Models Available for OEM.  
Discuss with Our Reps for Customized Solutions.



Palm-sized 3D Green Laser

**TED-3D**



Palm-sized 4D Green Laser

**TED-4D**



3D Flooring Laser Pro

**WT3DG-F**



Palm-sized 3D Green Laser Pro

**PT3DG-COMPACT**



## Technical Data

Working Range	100 ft(30m)
Accuracy	±1mm/5m
Self-leveling Range	±4°
Wave Length	520nm
Waterproof/ Dustproof	IP54
Power Supply	Li-ion Battery
Operating Temperature	14° F / -10° C ~ 104° F / 40° C
Incline Mode	Transport Lock & Individually Shiftable Function
Out-of-level-indication	Optical Signal And Audio Alert
Tripod Thread	1/4"

A Wide Range of Professional and DIY Models Available for OEM.  
Discuss with Our Reps for Customized Solutions.



DIY Crossline Green Laser Level

**PS21**



DIY Crossline Green Laser Level

**WP22G**



Crossline Green Laser Pro

**WG21**



Crossline Green / Red Laser

**TED-L21**

## Technical Data

Working Range	100 ft(30m)
Accuracy	±3mm/10m
Self-leveling Range	±3°
Wavelength	520nm
Waterproof/ Dustproof	IP54
Power Supply	Alkaline Batteries
Operating Temperature	14° F / -10° C ~ 104° F / 40° C
Incline Mode	Transport Lock & Individually Shiftable Function
Out-of-level-indication	Optical Signal And Audio Alert
Tripod Thread	1/4"





## LD-548

Professional 5 Line Laser Level

Working Range	130 ft(40m) Indoor
Accuracy	±1/4 In @ 100 ft (2mm @ 10m)
Self-leveling Range	±3°
Laser Class/ Wavelength	Class II/ 520nm
Power Supply	2 X Li-ion Batteries/Dry Battery
Tripod Thread	5/8"



## RL-306

Professional 5 Line Laser Level

Working Range	130 ft(40m) Indoor
Accuracy	±1/4 in @ 100 ft (2mm @ 10m)
Self-leveling Range	±3°
Laser Class/ Wavelength	Class II/ 532nm
Power Supply	Li-ion Battery/DC Charger
Tripod Thread	5/8"



## ML-5G

Professional 5 Line Laser Level

Working Range	130 ft(40m) Indoor
Accuracy	±1/4 in @ 100 ft (2mm @ 10m)
Self-leveling Range	±3°
Laser Class/ Wavelength	Class II/ 532nm
Power Supply	Li-ion Battery/DC Charger
Tripod Thread	5/8"



## G4168

Professional 5 Line Laser Level

Working Range	130 ft(40m) Indoor
Accuracy	±1/4 in @ 100 ft (2mm @ 10m)
Self-leveling Range	±3°
Laser Class/ Wavelength	Class II/ 532nm
Power Supply	Li-ion Battery/DC Charger
Tripod thread	5/8"



## WT230G

Professional 5 Line Laser Level

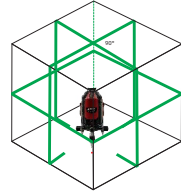
Working Range	130 ft(40m) Indoor
Accuracy	±1/4 in @ 100 ft (2mm @ 10m)
Self-leveling Range	±3°
Laser Class/ Wavelength	Class II/ 532nm
Power Supply	Li-ion Battery/DC Charger
Tripod Thread	5/8"



## BMOTO-8G

- Ultra-bright green laser points and lines.
- For horizontal leveling, vertical alignment, squaring, layout, and plumb point transfer.

**NEW**



## BMOTO-3D-P

Beiter Green Motorized 3D Laser with High Power Capacity

## BMOTO-8G

Beiter 8-line Green Motorized Laser System

### Technical Data

### BMOTO-3D-P

### BMOTO-8G

Working Range	130ft(40m)Indoor 230ft (70m) Working Range with Receiver	130ft(40m)Indoor 230ft (70m) Working Range with Receiver
Accuracy	±1/4 in @ 100 ft (2mm @ 10m)	±1/4 in @ 100 ft (2mm @ 10m)
Self-leveling Range	±3°	±3°
Laser Class/ Wavelength	Class II Green Line:520nm	Class II Green Line:510-540nm Plumb Dot:650nm
Waterproof/ Dustproof	IP54	IP54
Power Supply	3.7V Li-ion Battery/ DC Charger	3.7V Li-ion Battery/ 4 X AA Batteries/ DC Charger (AA Batteries Not Included In Some Countries)
Operating Temperature	14° F / -10° C ~ 104° F / 40° C	14° F / -10° C ~ 104° F / 40° C
Incline Mode	Transport Lock & Individually Shiftable Function	Transport Lock & Individually Shiftable Function
Out-of-level-indication	Optical Signal And Audio Alert	Optical Signal And Audio Alert
Tripod Thread	5/8"	5/8"



## Smart Size Rotary Laser

# RR3605/GR3605

## Self-leveling Red/Green Beam Rotary Laser Level

### Technical Data

Laser Features	Motorised Horizontal and Vertical Scanning
Working Range With Receiver	Red Laser: 400m(Diameter) Green Laser: 600m(Diameter)
Accuracy	±1/16"@100ft.(±0.05mm/m)
Self-leveling Range	±5°
Laser Class/Wavelength	Class 3R 635nm-7mw For Red Laser 520nm-30mw For Green Laser
Water Proof/Dustproof Rating	IP66
Horizontal Laser Angla	360°
Vertical Laser Angle	360°
Tripod Thread	5/8"
Power Supply	Li-ion Rechargeable Batteries
Operating Temperature	Red Laser: -10°C-45°C Green Laser: -10°C-50°C
Weight(With Battery)	1656g
DC Charger	Yes
Out-of-level Indication	Optical Signals
Incline Mode	Yes

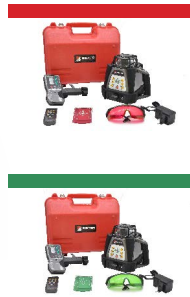


## RR3603/GR3603

Self-leveling Red/Green Beam Rotary Laser Level with Robust Housing Design

### Technical Data

Laser Features	Motorised Horizontal and Vertical Scanning
Working Range With Receiver	Red Laser: 400m(Diameter) Green Laser: 500m(with Laser Detector)
Accuracy	±1/16"@100ft.(±0.05mm/m)
Self-leveling Range	±8°
Laser Class/Wavelength	Class 3R 635nm-7mw For Red Laser 520nm-30mw For Green Laser
Water Proof/Dustproof Rating	IP66
Horizontal Laser Angla	360°
Vertical Laser Angle	360°
Tripod Thread	5/8"
Power Supply	4x Ni-MH Rechargeable Batteries
Operating Temperature	Red Laser:-10°C-45°C Green Laser:-10°C-50°C
Weight(With Battery)	1656g
DC Charger	Yes
Out-of-level Indication	Optical Signals
Incline Mode	Yes



2 Plumb Dots



Incline Mode



## RR3602/GR3602

Beiter Motorized Dual-direction Rotating Lasers

## RR3603/GR3603

Self-leveling Red/Green Beam Rotary Laser Level with Robust Housing Design

### Technical Data

Laser Features	Motorised Horizontal and Vertical Scanning	Motorised Horizontal and Vertical Scanning
Working Range With Receiver	Red Laser: 500m(Diameter) Green Laser: 800m(Diameter)	Red Laser: 500m(Diameter) Green Laser: 800m(with Laser Detector)
Accuracy	±1/16"@100ft.(±0.05mm/m)	±1/16"@100ft.(±0.05mm/m)
Self-leveling Range	±5°	±8°
Laser Class/Wavelength	Class 3R 635nm For Red Laser 532nm For Green Laser	Class 3R 635nm For Red Laser 532nm For Green Laser
Water Proof/Dustproof Rating	IP65	IP66
Horizontal Laser Angla	360°	360°
Vertical Laser Angle	360°	360°
Tripod Thread	5/8"	5/8"
Power Supply	4x Ni-MH Rechargeable Batteries	4x Ni-MH Rechargeable Batteries
Operating Temperature	Red Laser:-10°C-45°C Green Laser:-10°C-50°C	Red Laser:-10°C-45°C Green Laser:-10°C-50°C
DC Charger	Yes	Yes
Out-of-level Indication	Optical Signals	Optical Signals
Incline Mode	Yes	Yes



## BOL-32X

Beiter 32X Automatic Optical Level



### Technical Data

Model No.	32X
Image	Erect Image
Objective Aperture	≥42mm
Min.focusing Distance	0.3mm
Stadia Multiplication Constant	100
Stadia Additive Constant	0
Resolution	≤4"
Working Range	15'
Compensating Error	≤±0.3"/1'
Setting Accuracy	≤±0.5"
Scale Graduation Range	360°/400G
Scale Minimum Value	1" /1gon
GO/RE Observation Error	±2mm/km
Sensitivity of Circular Bubble	8'/2mm
Base Screw	M16 or 5/8" X1/11" (Optional)
Environmental Temperature	-25°C to 50°C

### Features

### The Most Accurate Optical Level on Site

- Flexibility - The BOL series is designed for all types of surveying tasks, including routine leveling on construction sites, check or monitor buildings, railways or roads.
- Highest accuracy and reliability. The top-class optical quality of Beiter Laser System delivers a high contrast image and precise reading even under unfavorable light conditions.
- High temperature stability and fast set-up - Use the coarse movement of the focusing knob for rapid setting with minimum turning. Fine movement gives final touch a perfect image.



## DLD802

Professional Laser Receiver

### Technical Data

Leveling Accuracy (High):	1mm
Leveling Accuracy (Normal):	2mm
Leveling Accuracy (Low):	5mm
Laser Reception Window Width:	130mm
Working Radius:	≤350m
Bubble Vial Accuracy:	30' /3nm
Operation Time:	24h(No LCD Back Light)
Auto Power Off (with NO Signal Detected):	30min
Power Supply:	4 X AA Batteries (Alkaline)
IP Rating:	IP56
Operating Temperature Range:	-10°C~50°C
Storage Temperature Range:	-20°C~70°C



### LR-70

Laser Receiver With Clamp



### LR-90G

Laser Receiver With Clamp



### LR-10GS

Laser Receiver With Clamp

- **LR-70** Suits All Beiter Red Construction Professional Linear Lasers With Detector Mode.
- **LR-90g** Suits All Beiter Green Lasers In 275HZ Frequency With Detector Mode.
- **LR-10gs** Suits All Beiter Green Lasers In 5k HZ Frequency With Detector Mode.

- Led Light Indicator.
- Sensor Panel And Speaker.
- Best Within 1-70m (5-220ft) Range.

# LASER DISTANCE METER

## BR-T40/60/80

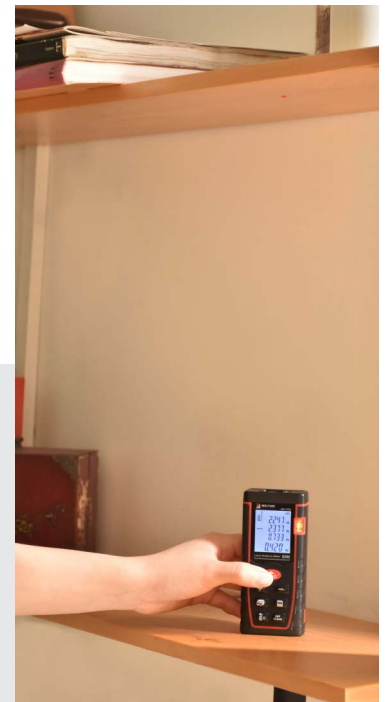


### Features

- Measures Distance, Area, Volume, And Pythagoras
- Addition and Subtraction Function
- Backlit LCD Screen
- Delayed Measurement Function
- Continuous Measurement Tracking
- Auto Power Off

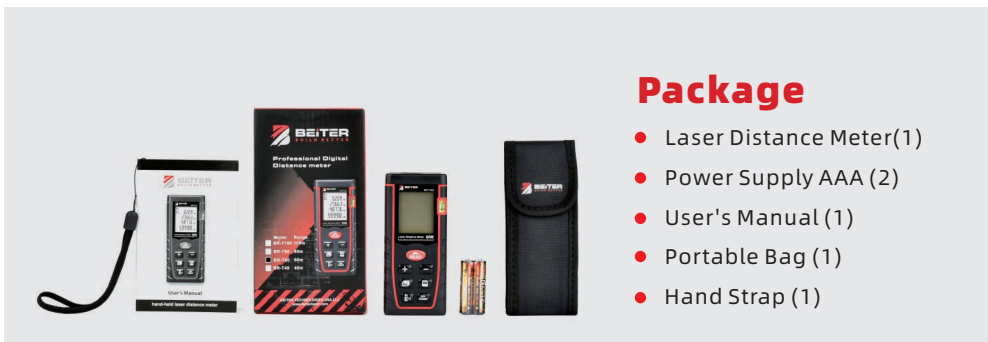
### Specifications

- Accuracy:  $\pm 2$  mm
- Laser Class: 2 ( $< 1$  mW 635 nm)
- Operating Distance: 0.05-40 m
- Operating Temperature: 0-40°C
- Max Storage: 30 Units
- Power Source: 2 x 1.5V AAA
- Memory Record: 100 Measurements
- Weight (Including Battery): 110g
- Dimension: 112 x 50 x 25mm



### Package

- Laser Distance Meter(1)
- Power Supply AAA (2)
- User's Manual (1)
- Portable Bag (1)
- Hand Strap (1)





## Beiter Measuring Tape



BT-5019	
Tape Length	5M
Tape Width	19mm
Tape Thickness	0.115mm
Metric/ Imperial Markings	



BT-7525	
Tape Length	5.5M
Tape Width	25mm
Tape Thickness	0.115mm
Metric/ Imperial Markings	



BT-7525	
Tape Length	7.5M
Tape Width	25mm
Tape Thickness	0.115mm
Metric/ Imperial Markings	



BT-5527	
Tape Length	5.5M
Tape Width	27mm
Tape Thickness	0.165mm
Metric/ Imperial Markings With Magnet	

BT-8027	
Tape Length	8M
Tape Width	27mm
Tape Thickness	0.165mm
Metric/ Imperial Markings With Magnet	

**NEW**  
accessory!

One-button  
Quick Change Screw



Available For 1/4" Or 5/8" Thread

## LWP-MK

### Versatile "Yoga" Magnetic Wall Mount

#### 5 KEY BREAKTHROUGH!

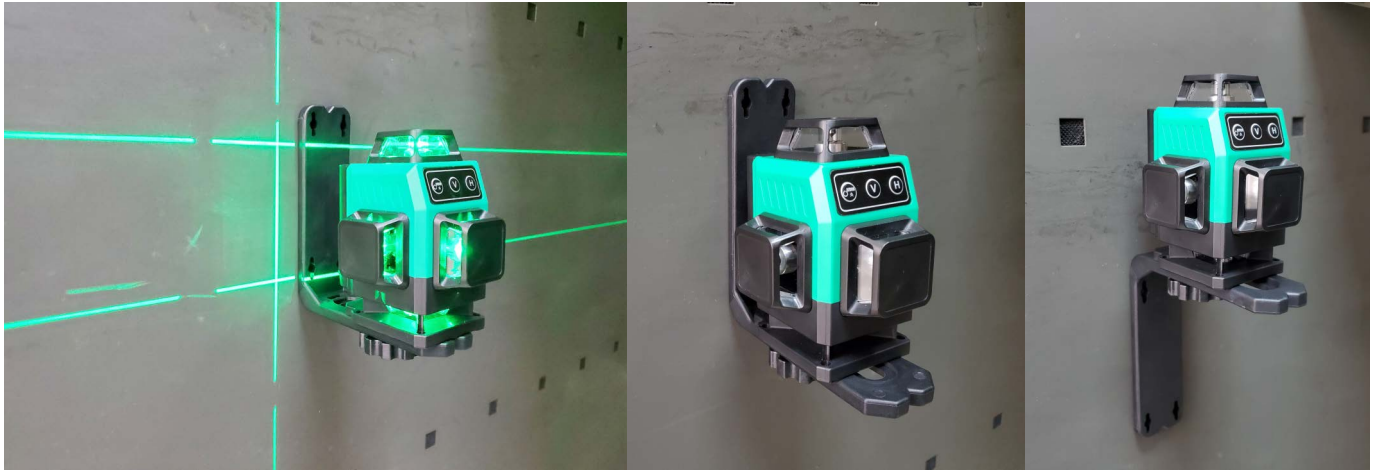
1. Interchangeable 1/4" and 5/8" thread\*  
(Ship with 1/4" by default, 5/8" at request)
2. Mount to a tripod to function as a reclining tripod.
3. Super heavy duty with rare earth magnet. Max. weight: 10lbs
4. Flexible angle adjustment
5. Extended length for extra support.  
(can lift a rotary laser)



## LWP-MJ

### LWP-MJ L-shaped Magnetic Wall Mount

1/4" Thread



## Premium wall mount / base

**NEW**  
accessory!



**LWP-MK**  
Versatile "Yoga"  
Magnetic Wall Mount  
(5/8" or 1/4" Thread)

**NEW**  
accessory!



**LWP-MJ**  
L-shaped Magnetic Wall Mount,  
1/4" Thread



**L-Clamp**  
Multi-angle Base  
1/4" Adaptor



**LB-FRB1**  
Fine-tuning  
Rotating Base, 1/4" Thread  
  
Rotates 360° by the precision of  
a fine adjustment knob, while staying  
centered on the plumb point



**L213B-RB**  
Rotating Base with Angle Scale  
5/8" Thread



**LWP-PMX**  
Heavy Duty Magnetic  
Rotating Wall Mount  
5/8" Thread



**LSP00801**  
Heavy Duty Laser Level Ceiling  
Mounting Bracket, 1/4" Thread



**LSP10002**  
5/8" Incline Bracket



# Aluminum Surveying Tripod



## BT160FH/DH

### EXTENDABLE

The Beiter BT160FH/DH tripod provides extendable height adjustments so the user can expand tripod up to 63 inches for different height applications.

### ADJUSTABLE

The tripod features a steady adjustable base that swivels, adjusts, and tightens product for steady measurement applications.

### PORTABLE

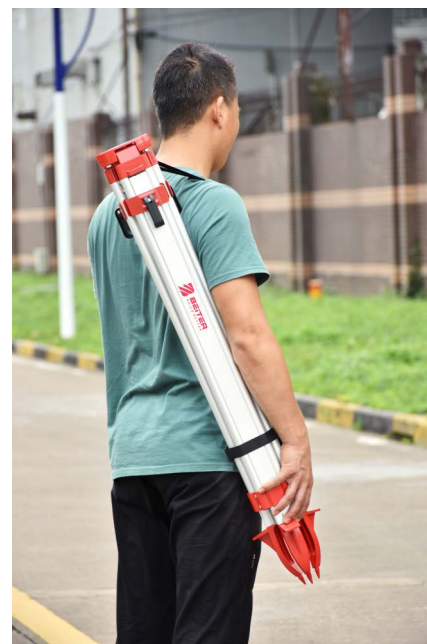
The Beiter BT160FH/DH is portable and lightweight with collapsible legs and built-in strap. At only 8 lbs. the tripod is easy to store and transport.

### STABILITY

The Beiter BT160FH/DH tripod provides an adjustment system that tightens the tripod for increased stability at the user's desired height.

### VERSATILE

Industry standard 5/8-inch x 11 mounting threads with both flat head and domed head design, the The Beiter BT160FH/DH is universal with a string hook for plumb bobs as well.

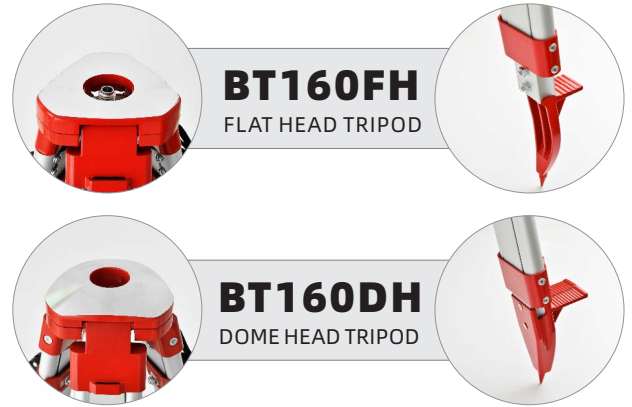


# Aluminum Surveying Tripod

## Model: BT160

### Specifications

Closed Height	38in.(97cm)
Extended Height	63in.(160cm)
Material	Aluminum
Weight	8 lbs



### LIGHTWEIGHT AND DURABLE

Aluminum Design hinges, clamps and shoe casting.

### FLAT, DOME, ELEVATOR HEAD TYPE

With standard 5/8-inch x 11 mounting threads

### PAINTED SHOE CASTING

For durable and long lasting finish.

### EXTENDABLE HEIGHT

65 IN. extended height

### STRING HOOK

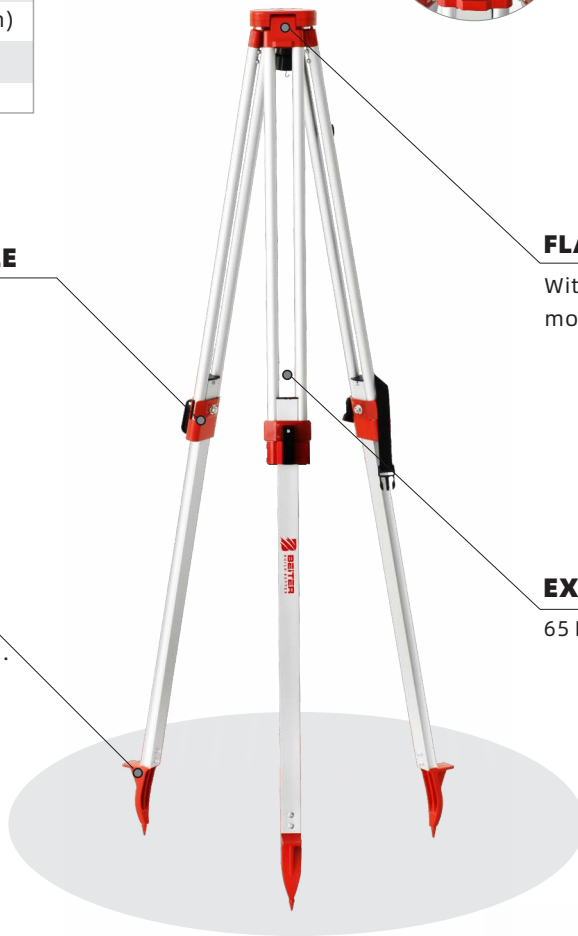
For a plumb bob

### QUICK-CLAMP RELEASE

Allows easy setup and take-down

### ELECTROSTATIC POWER-PAINTED CASTING

Provides a durable, long-lasting finish



## Professional Tripods

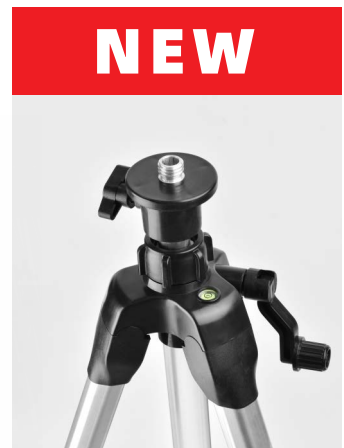
### T102/ T120/ T150

1 m/1.2m/1.5m  
 Aluminum Elevating Tripod • 5/8"  
 (Can be supplied with 1/4" adaptor,  
 or incline adaptor. Ask our reps.)



### T145/ T160MX-INC/ T180MX-IN

Premium Industrial Grade Aluminum Elevating  
 Tripod with Sturdy Horseshoe™ foot, 5/8"  
 (Can be supplied with 1/4" adaptor,  
 or incline adaptor. Ask our reps.)



### BTSTAFF-LR

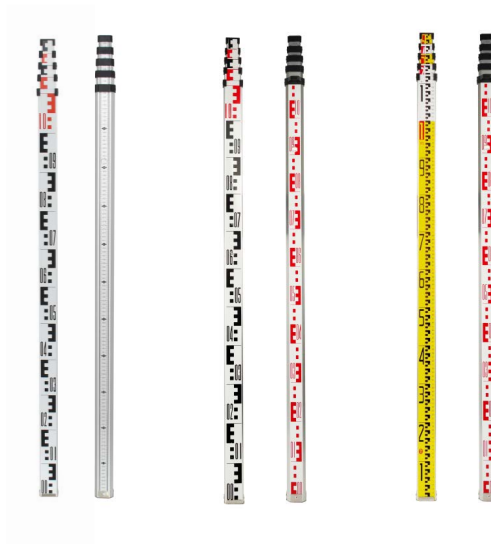
2.4 meter Laser Rod

- 2.4m Adjustable height grade rod for operation over various inclines
- Attached bubble vial for accurate setting of graderod
- Sliding detector mount for increased speed and accuracy of readings



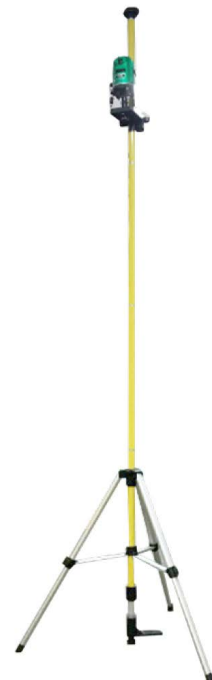
### BE-STAFF(3M/ 5M)

Telescopic Leveling Staff  
 E-face 5m 5-section Staff  
 0.5cm-face 5m 5-section staff



### BTP-37S

Beiter 3.7m Adjustable  
 Telescoping Pole  
 with Tripod



# POWER TOOLS



## BT420-12V

### 12V Cordless 2 Speed Drill

Rated Voltage	12V
Battery Capacity	2.0Ah
No Load Speed	0-350/1350 rpm
Chuck Size	10mm
Max Torque	28 Nm
Torque Setting	16+1
Drilling Capacity	Wood 21mm/Steel 10mm
Weight	1Kg(bare)
Accessories	2x Li-ion Batteries, Charger, Tool Bag



## BT430-12V

### 12V Cordless 2 Speed Drill with Brushless Motor

Rated Voltage	12V
Battery Capacity	2.0Ah
No Load Speed	0-450/1400 rpm
Chuck Size	10mm
Max Torque	36 Nm
Torque Setting	20+1
Drilling Capacity	Wood 20mm/Steel 10mm
Weight	0.88Kg(bare)
Accessories	2x Li-ion Batteries, Charger, Tool Bag



## BM418-12V

### 12V Cordless Impact Driver

Rated Voltage	12V
Battery Capacity	2.0Ah
No Load Speed	0-2600 rpm
Impact Rate	0-3000 bpm
Collet Size	6.35mm(1/4") Hex
Max Torque	100 Nm
Weight	1Kg(bare)
Accessories	2x Li-ion Batteries, Charger, Tool Bag



## C12-2B1 12V COMBO KIT

Item No.	BT420-12V	BM418-12V
Rated Voltage	12V	12V
Battery Capacity	2.0Ah	2.0Ah
No Load Speed	0-350/1350 rpm	0-2600 rpm
Chuck Size	10mm	6.35mm(1/4") Hex
Impact Rate	/	0-3000 bpm
Max Torque	28 Nm	100 Nm
Torque Setting	16+1	/
Drilling Capacity	Wood 21mm/ Steel 10mm	/
Weight	1Kg(bare)	1Kg(bare)
Accessories	2x Li-ion Batteries, Charger, Tool Box	

BT420-12V

BM418-12V



Accessories





## BT420-16V

### 16V Cordless 2 Speed Drill

Rated Voltage	16V
Battery Capacity	2.0Ah
No Load Speed	0-450/1650 rpm
Chuck Size	10mm
Max Torque	32 Nm
Torque Setting	16+1
Drilling Capacity	Wood 20mm/ Steel 10mm
Weight	1.1Kg(bare)
Accessories	2x Li-ion Batteries, Charger, Tool Bag



## BT430-16V

### 16V Cordless 2 Speed Drill with Brushless Motor

Rated Voltage	16V
Battery Capacity	2.0Ah
No Load Speed	0-500/1500 rpm
Chuck Size	10mm
Max Torque	40 Nm
Torque Setting	20+1
Drilling Capacity	Wood 20mm/ Steel 10mm
Weight	0.8Kg(bare)
Accessories	2x Li-ion Batteries, Charger, Tool Bag



## BT432-16V

### 16V Cordless Hammer Drill with Brushless Motor

Rated Voltage	16V
Battery Capacity	2.0Ah
No Load Speed	0-500/1500 rpm
Impact Rate	0-1100/3200 bpm
Chuck Size	10mm
Max Torque	40 Nm
Torque Setting	20+1+1
Drilling Capacity	Wood 20mm/ Steel 10mm/ Concrete 8mm
Weight	0.8Kg(bare)
Accessories	2x Li-ion Batteries, Charger, Tool Bag



## BM418-16V

### 16V Cordless Impact Driver

Rated Voltage	16V
Battery Capacity	2.0Ah
No Load Speed	0-2600 rpm
Impact Rate	0-3100 bpm
Collet Size	6.35mm (1/4") Hex
Max Torque	107 Nm
Weight	1.1Kg(bare)
Accessories	2x Li-ion Batteries, Charger, Tool Bag



## BM428-16V

### 16V Cordless Impact Driver Pro. (Brushless)

Rated Voltage	16V
Battery Capacity	2.0 Ah
No Load Speed	0-3000 rpm
Impact Rate	0-3300 bpm
Chuck	1/4 in.(6.35mm)
Max Torque	130 Nm
Weight	1.3kg(bare)
Accessories	2x Li-ion Batteries, Charger, Tool Bag



## BC280-16V

### 16V Cordless Hammer Drill

Rated Voltage	16V
Battery Capacity	2.0 Ah
No Load Speed	0-450/1600 rpm
Impact Rate	0-3200 bpm
Chuck Size	10mm
Max Torque	32 Nm
Torque setting	16+1+1
Drilling capacity	Wood 20mm/ Steel 10mm
Weight	1.3kg(bare)
Accessories	2x Li-ion Batteries, Charger, Tool Bag



## C16-2B1 16V COMBO KIT

Item No.	BT420-16V	BM418-16V
Rated Voltage	16V	16V
Battery Capacity	2.0 Ah	2.0 Ah
No Load speed	0-450/1650 rpm	0-2650 rpm
Chuck Size	10mm	6.35mm (1/4") Hex
Impact Rate	/	3100 bpm
Max Torque	32 Nm	107 Nm
Torque Setting	16+1	/
Drilling Capacity	Wood 25mm/Steel 10mm	/
Accessories	2x Li-ion Batteries, Charger, 2x Drill, Tool Box	

### BT420-16V

### BM418-16V



### Accessories



## C16-4B1 16V Brushless POWER COMBO KIT

Item No.	BT430-16V BL	BT432-16V BL
Rated Voltage	16V	16V
Battery Capacity	2.0Ah	2.0Ah
No Load Speed	0-500/1500 rpm	0-500/1500 rpm
Chuck Size	10mm	10mm
Impact Rate	/	0-1100/3200 bpm
Max Torque	40 Nm	40 Nm
Torque Setting	20+1	20+1+1
Drilling Capacity	Wood 20mm/Steel 10mm	Wood 20mm/Steel 10mm/ Concrete 8mm
Accessories	2x Li-ion Batteries, Charger, Tool Box	

### BT430-16V

### BT432-16V



### Accessories



## BT421-20V

### 20V Cordless 2 Speed Drill

Rated Voltage	20V
Battery Capacity	2.0 Ah
No Load Speed	0-450/1600 rpm
Chuck Size	10mm
Max Torque	45 Nm
Torque Setting	16+1
Drilling Capacity	Wood 30mm/Steel 10mm
Weight	1.3kg(bare)
Accessories	2x Li-ion Batteries, Charger, Tool Bag



## BC280-20V

### 20V Cordless Hammer Drill

Rated Voltage	20V
Battery Capacity	2.0 Ah
No Load Speed	0-450/1650 rpm
Impact Rate	0-3400 bpm
Chuck Size	10mm
Max Torque	45 Nm
Torque setting	16+1+1
Drilling capacity	Wood 21mm/ Steel 10mm/ Concrete 8mm
Weight	1.3kg(bare)
Accessories	2x Li-ion Batteries, Charger, Tool Bag



## BT430-20V

### 20V Cordless 2 Speed Drill with Brushless Motor

Rated Voltage	20V
Battery Capacity	2.0 Ah
No Load Speed	0-450/1800 rpm
Chuck Size	10 mm
Max Torque	45 Nm
Torque Setting	20+1
Drilling Capacity	Wood 30mm/Steel 12mm
Weight	1.3kg(bare)
Accessories	2x Li-ion Batteries, Charger, Tool Bag



## BT432-20V

### 20V Cordless Hammer Drill with Brushless Motor

Rated Voltage	20V
Battery Capacity	2.0 Ah
No Load Speed	0-450/1800 rpm
Impact Rate	0-1050/3400 bpm
Chuck Size	10 mm
Max Torque	45 Nm
Torque Setting	20+1+1
Drilling Capacity	Wood 30mm/Steel 12mm/ Concrete 10mm
Weight	1.27kg(bare)
Accessories	2x Li-ion Batteries, Charger, Tool Bag



## BL55M

### 20V Cordless Impact Driver with Brushless Motor

Rated Voltage	20V
Battery Capacity	5.0 Ah
No Load Speed	0-1900/2500 rpm
Impact Rate	0-2200/3000 bpm
Chuck Size	6.35mm(1/4") Hex
Max Torque	175 Nm(1550 in.-lbs.)
Weight	1.6kg(bare)
Accessories	2x Li-ion Batteries, Charger, Tool Bag



## BL65W

### 20V Cordless Impact Wrench with Brushless Motor

Rated Voltage	20V
Battery Capacity	5.0 Ah
No Load Speed	0-1900/2500 rpm
Impact Rate	0-2200/3000 bpm
Chuck Size	12.7mm(1/2")
Max Torque	310 Nm
Weight	1.7kg(bare)
Accessories	2x Li-ion Batteries, Charger, Tool Bag



## BL30SC

### 20V Cordless Pruning Scissors with Brushless Motor

Max Cut Diameter	30mm
Rated Voltage	20v
Rated Power	150w
Adjustable Opening	√
Cut Protection	Optional
Safety Switch	√
Display Panel	√
Lubricant Oil Port	√
Stepless Speed Change	√
Rapid Charge	√
Antilocking	√
Blade Quality	SK5
Motor Type	Conventional Brush Motor
Non-Slip Handle	√



## BA618-20V

### 20V Cordless Angle Grinder With Brushless Motor

Rated Voltage	20V
Battery Capacity	5.0Ah
No Load Speed	10000 rpm
Dia. of Grinding Wheel	100mm
Dia. of Hole	16mm
Spindle Thread	M10
Weight	1.4kg
Accessories	2x Li-ion Batteries, Charger





## BRH60-20V

20V Cordless Rotary Hammer With Brushless Motor

Rated Voltage	20V
Battery Capacity	5.0Ah
No Load Speed	0-1450 rpm
Impact Rate	0-4500 bpm
Impact Energy	2.2 Joules
Drilling Capacity	Wood 22mm/ Steel 13mm/ Concrete 22mm
Chuck Size	8-12mm
Weight	2.6kg
Accessories	2x Li-ion Batteries, Charger, Tool Box



## BRH70-20V

20V Cordless Brushless Rotary Hammer Drill

Rated Voltage	20V
Battery Capacity	5.0 Ah
No Load Speed	0-1600 rpm
Impact Rate	0-4500 bpm
Impact Energy	2.0J
Drilling Capacity	Wood 28mm/ Steel 13mm/ Concrete 22mm
Chuck Size	8-12mm
Charging Time	100 minutes
Weight	2.6kg(bare)
Accessories	2x Li-ion Batteries, Charger



## R20-RHA 20V Brushless POWER COMBO KIT

Item No.	BA618-20V	BRH60-20
Rated Voltage	20V	20V
Battery Capacity	5.0Ah	5.0Ah
No Load Speed	10000 rpm	0-1450 rpm
Dia. of Grinding Wheel	100mm	/
Dia. of Hole	16mm	/
Spindle Thread	M10	/
Impact Rate	/	0-4500 bpm
Impact Energy	/	2.2 Joules
Drilling Capacity	/	Wood 22mm/ Steel 13mm/ Concrete 22mm
Chuck Size	/	8-12mm
Weight	1.4kg	2.6kg
Accessories	2x Li-ion Batteries, Charger, Tool Bag	



### A21221P 12V

Battery Voltage	12V
Battery Capacity	2.0Ah
Power	24Wh



### A21221P 16V

Battery Voltage	16V
Battery Capacity	2.0Ah
Power	32Wh



### A218201P

Battery Voltage	20V
Battery Capacity	2.0Ah
Power	40Wh



### A218502P

Battery Voltage	20V
Battery Capacity	5.0Ah
Power	100Wh



### T1215C 12V

For Use With	A21221P 12V
Charging Time	80min



### T1615C 16V

For Use With	A21221P 16V
Charging Time	80min



### D1820H

A218201P 20V	A21221P 16V
60min (2.0Ah)	80min



### Y1830H

A218201P 20V	A218502P 20V
60min (2.0Ah)	80min (5.0Ah)

## BT-26SRE850

### 850W 3 FUNCTION SDS+ Rotary Hammer

Rated Voltage	240V/50Hz
Drilling Capacity	Wood 22mm/ Steel 13mm/ Concrete 26mm
Impact Rate	0-4800 bpm
Rated Input Power	850W
No Load Speed	0-1300rpm
Impact Energy	3.2j



## BT-26SRE950

### 950W 3 FUNCTION SDS+ Rotary Hammer

Rated Voltage	240V/50Hz
Drilling Capacity	Wood 32mm/ Steel 13mm/ Concrete 30mm
Impact Rate	0-4800 bpm
Rated Input Power	850W
No Load Speed	0-1300rpm
Impact Energy	3.3j





## BVS08

### 20V Brushless Stick Vacuum Cleaner Kit

Rated Voltage	20V
Battery Capacity	5.0 Ah
No Load Speed	100000 rpm
Suction Power	120Aw
Max Suction	20kPa
Tank Capacity	900ml
Max Running Time	60mins
Accessories	Li-Ion Battery, Charger, Wall-Mounted Dock, Handheld Components, Extra-large Dirt Bin, Aluminum Tube, Floor Brush, Suction Nozzle, Brush



## HGUN-007

### 20V Cordless Pressure Washer Kit with Brushless Motor

Rated Voltage	20V
Max Pressure	25 Bar
Water Flow	210L/H
Motor Type	DC
Weight	1.35Kg(bare)
Accessories	2x Li-ion Batteries, Charger, Nozzle, Hose, Long Lance, Soap Dispenser



## BT-S221

### 20V Cordless Recircation Saw with Brushless Motor

Rated Voltage	20V
Battery Capacity	2.0 Ah
No Load Speed	3000 bpm
Stroke Length	21mm
Chuck Type	SDS
Cutting Depth	Wood 200mm/ Steel 14mm
Weight	1.5Kg(bare)
Accessories	2x Li-ion Batteries, Charger, Tool Bag



## BI-BTS125

### CORDLESS CIRCULAR SAW

Lithium-Ion Power Brushless

Voltage	20V
No-load Speed	7000 bpm
Blade Dia.	125mm
Inner Dia.	20mm
90° Cutting	43mm
45° Cutting	31mm
Base Rotation	0-45°



## BT-CS185

### 185mm Circular Saw / 7"

Blade Dia.	185mm
Inner Dia.	20mm
No-load Speed	6000 bpm
Input Power	1250W
Input Voltage	220V~240V
Rated Frequency	50/60Hz
90° Cutting	59mm
45° Cutting	38mm

Includes Ruler, Brush, Wrench

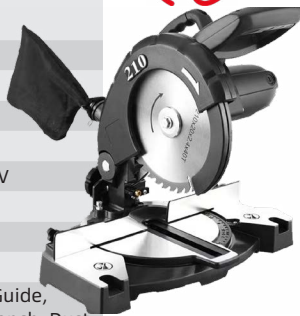


## BT-CS235

### 235mm Circular Saw / 9"

Blade Dia.	235mm
Inner Dia.	25.4mm
No-load Speed	4000 bpm
Input Power	2300W
Input Voltage	220V~240V
Rated Frequency	50/60Hz
90° Cutting	76mm
45° Cutting	54mm

Includes Crosscut Guide, Brush, Wrench, Dust Collector, 210mm Saw Blade

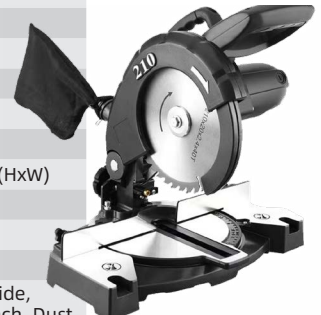


## BT-MS210L

### 210mm Miter Saw with Laser / 8"

Blade Dia.	210mm
No-load Speed	5800 bpm
Input Power	1200W
Input Voltage	220V~240V
Rated Frequency	50/60Hz
Max Cutting Capacity 0°	45x115mm (HxW)
Max Cutting Capacity 45°	45x95mm
Head Tilting 0°	45x115mm
Head Tilting 45°	25x115mm

Includes Crosscut Guide, Brush, Wrench, Dust Collector, 210mm Saw Blade



## BT-MS255

### 255mm Miter Saw / 10"

Blade Dia.	255mm
No-load Speed	4600 bpm
Input Power	1650W
Input Voltage	220V~240V
Rated Frequency	50/60Hz
Max Cutting Capacity 0°	100x110mm (HxW)
Max Cutting Capacity 45°	100x85mm
Head Tilting 0°	90x110mm
Head Tilting 45°	40x86mm

Includes Crosscut Guide, Brush, Wrench



## BT-MS305

### 305mm Miter Saw / 12"

Blade Dia.	305mm
No-load Speed	5000 bpm
Input Power	1800W
Input Voltage	220V~240V
Rated Frequency	50/60Hz
Max Cutting Capacity 0°	65x195mm (HxW)
Max Cutting Capacity 45°	45x195mm
Head Tilting 0°	65x140mm
Head Tilting 45°	45x135mm

Includes Crosscut Guide, Brush, Wrench



## BT-MS355

### 355mm Miter Saw / 14"

Blade Dia.	355mm
No-load Speed	5000 bpm
Input Power	2200W
Input Voltage	220V~240V
Rated Frequency	50/60Hz
Max Cutting Capacity 0°	65x210mm (HxW)
Max Cutting Capacity 45°	45x155mm
Head Tilting 0°	65x140mm
Head Tilting 45°	45x135mm

Includes Crosscut Guide, Brush, Wrench



## BT-SMS255L

### 255mm Sliding Miter Saw with Laser / 10"

Blade Dia.	255mm
No-load Speed	6000 bpm
Input Power	1800W
Input Voltage	220V~240V
Rated Frequency	50/60Hz
Max Cutting Capacity 0°	85x300mm (HxW)
Max Cutting Capacity 45°	85x210mm
Head Tilting 0°	45x200mm
Head Tilting 45°	45x210mm

Includes Crosscut Guide, Brush, Wrench





## KEYLESS DRILL CHUCK

Model No.	Maximum Gripping Capacity	Internal Thread
BT-1038A	10mm	3/8"
BT-1338A	13mm	3/8"
BT-1312A	13mm	1/2"



## KEYLESS DRILL CHUCK(Aluminum alloy)

Model No.	Maximum Gripping Capacity	Internal Thread
BT-13BLD	13mm	1/2"



## DRILL CHUCK

Model No.	Maximum Gripping Capacity	Internal Thread
BT-1038B	10mm	3/8"
BT-1312B	13mm	1/2"



## DRILL CHUCK for SCRE DRIVER

Model No.	Maximum Gripping Capacity	Internal thread
BT-1038C	10mm	3/8"



## DRILL CHUCK ACCESSORIES

Model No.	Internal Thread
BI2100	3/8"
BI2101	1/2"
BI2102	1/2"





## HSS M35 BLACK & GOLD TWIST DRILL BITS (Imperial Unit)

Model No.	Specification	Body Length	Bit Blade Length
BI5001	1/16"	1-7/8"	7/8"
BI5002	5/64"	2"	1"
BI5003	3/32"	2-1/4"	1-1/4"
BI5004	7/64"	2-5/8"	1-1/2"
BI5005	1/8"	2-3/4"	1-5/8"
BI5006	9/64"	2-7/8"	1-3/4"
BI5007	5/32"	3-1/8"	2"
BI5008	11/64"	3-1/4"	2-1/8"
BI5009	3/16"	3-1/2"	2-5/16"
BI5010	13/64"	3-5/8"	2-7/16"
BI5011	7/32"	3-3/4"	2-1/2"
BI5012	15/64"	3-7/8"	2-5/8"
BI5013	1/4"	4"	2-3/4"
BI5014	17/64"	4-1/8"	2-7/8"
BI5015	9/32"	4-1/4"	2-15/16"
BI5016	19/64"	4-3/8"	3-1/16"
BI5017	5/16"	4-1/2"	3-3/16"
BI5018	21/64"	4-5/8"	3-5/16"
BI5019	11/32"	4-3/4"	3-7/16"
BI5020	23/64"	4-7/8"	3-1/2"
BI5021	3/8"	5"	3-5/8"
BI5022	25/64"	5-1/8"	3-3/4"
BI5023	13/32"	5-1/4"	3-7/8"
BI5024	27/64"	5-3/8"	3-15/16"
BI5025	7/16"	5-1/2"	4-1/16"
BI5026	29/64"	5-5/8"	4-3/16"
BI5027	15/32"	5-3/4"	4-5/16"
BI5028	31/64"	5-7/8"	4-3/8"
BI5029	1/2"	6"	4-1/2"

## HSS M35 BLACK & GOLD TWIST DRILL BITS (Metric Unit)

Model No.	Specification	Body Length	Bit Blade Length
<b>BI5030</b>	<b>0.3mm</b>	<b>19mm</b>	<b>3mm</b>
BI5031	0.4mm	20mm	5mm
BI5032	0.5mm	22mm	6mm
BI5033	0.6mm	24mm	7mm
BI5034	0.7mm	28mm	9mm
BI5035	0.8mm	30mm	10mm
BI5036	0.9mm	32mm	11mm
BI5037	1mm	34mm	12mm
BI5038	1.1mm	36mm	14mm
BI5039	1.2mm	38mm	16mm
BI5040	1.3mm	40mm	18mm
BI5041	1.4mm	40mm	18mm
BI5042	1.5mm	43mm	20mm
BI5043	1.6mm	43mm	20mm
BI5044	1.7mm	46mm	22mm
BI5045	1.8mm	46mm	22mm
BI5046	1.9mm	49mm	24mm
BI5047	2mm	49mm	24mm
BI5048	2.1mm	49mm	24mm
BI5049	2.2mm	53mm	27mm
BI5050	2.3mm	53mm	27mm
BI5051	2.4mm	57mm	30mm
BI5052	2.5mm	57mm	30mm
BI5053	2.6mm	57mm	30mm
BI5054	2.7mm	61mm	33mm
BI5055	2.8mm	61mm	33mm
BI5056	2.9mm	61mm	33mm
BI5057	3mm	61mm	33mm
BI5058	3.1mm	65mm	36mm
BI5059	3.2mm	65mm	36mm
BI5060	3.3mm	65mm	36mm
BI5061	3.4mm	70mm	39mm



## HSS M35 BLACK & GOLD TWIST DRILL BITS (Metric unit)

Model No.	Specification	Body Length	Bit Blade Length
BI5062	3.5mm	70mm	39mm
BI5063	3.6mm	70mm	39mm
BI5064	3.7mm	70mm	39mm
BI5065	3.8mm	75mm	43mm
BI5066	3.9mm	75mm	43mm
BI5067	4mm	75mm	43mm
BI5068	4.1mm	75mm	43mm
BI5069	4.2mm	75mm	43mm
BI5070	4.3mm	80mm	47mm
BI5071	4.4mm	80mm	47mm
BI5072	4.5mm	80mm	47mm
BI5073	4.6mm	80mm	47mm
BI5074	4.7mm	80mm	47mm
BI5075	4.8mm	86mm	52mm
BI5076	4.9mm	86mm	52mm
BI5077	5mm	86mm	52mm
BI5078	5.1mm	86mm	52mm
BI5079	5.2mm	86mm	52mm
BI5080	5.3mm	86mm	52mm
BI5081	5.4mm	93mm	57mm
BI5082	5.5mm	93mm	57mm
BI5083	5.6mm	93mm	57mm
BI5084	5.7mm	93mm	57mm
BI5085	5.8mm	93mm	57mm
BI5086	5.9mm	93mm	57mm
BI5087	6mm	93mm	57mm
BI5088	6.5mm	101mm	63mm
BI5089	6.8mm	109mm	69mm
BI5090	7mm	109mm	69mm
BI5091	7.5mm	109mm	69mm
BI5092	8mm	117mm	75mm
BI5093	8.5mm	117mm	75mm
BI5094	9mm	125mm	81mm
BI5095	9.5mm	125mm	81mm
BI5096	10mm	133mm	87mm
BI5097	10.5mm	133mm	87mm
BI5098	11mm	142mm	94mm
BI5099	11.5mm	142mm	94mm
BI5100	12mm	151mm	101mm
BI5101	12.5mm	151mm	101mm
BI5102	13mm	151mm	101mm



## HSS M35 BLACK & GOLD TWIST DRILL BITS (Metric unit, Long size)

Model No.	Specification	Body Length	Bit Blade Length
BI5103	2mm	85mm	56mm
BI5104	2.5mm	95mm	62mm
BI5105	3mm	100mm	66mm
BI5106	3.5mm	110mm	73mm
BI5107	4mm	119mm	78mm
BI5146	4.2mm	119mm	78mm
BI5108	4.5mm	126mm	82mm
BI5109	5mm	132mm	87mm
BI5110	5.5mm	139mm	91mm
BI5111	6mm	139mm	91mm
BI5112	6.5mm	148mm	97mm
BI5113	7mm	156mm	102mm
BI5114	8mm	165mm	109mm
BI5115	9mm	175mm	115mm
BI5116	10mm	184mm	121mm



## HSS M35 BLACK & GOLD TWIST DRILL BITS (Metric unit, Long size)

Model No.	Specification	Body Length	Bit Blade Length
BI5117	13.5mm	151.8mm	75.9mm
BI5118	14mm	151.8mm	75.9mm
BI5119	14.5mm	151.8mm	75.9mm
BI5120	15mm	151.8mm	75.9mm
BI5121	15.5mm	151.8mm	75.9mm
BI5122	16mm	151.8mm	75.9mm
BI5123	16.5mm	151.8mm	75.9mm
BI5124	17mm	151.8mm	75.9mm
BI5125	17.5mm	151.8mm	75.9mm
BI5126	18mm	151.8mm	75.9mm
BI5127	18.5mm	151.8mm	75.9mm
BI5128	19mm	151.8mm	75.9mm
BI5129	19.5mm	151.8mm	75.9mm
BI5130	20mm	151.8mm	75.9mm
BI5131	21mm	151.8mm	75.9mm
BI5132	22mm	151.8mm	75.9mm
BI5133	23mm	151.8mm	75.9mm
BI5134	24mm	151.8mm	75.9mm
BI5135	25mm	151.8mm	75.9mm
BI5136	26mm	151.8mm	75.9mm
BI5137	27mm	151.8mm	75.9mm
BI5138	28mm	151.8mm	75.9mm
BI5139	29mm	151.8mm	75.9mm
BI5140	30mm	151.8mm	75.9mm
BI5141	32mm	151.8mm	75.9mm



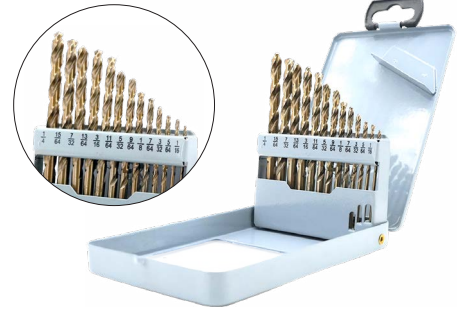
## HSS M35 BLACK & GOLD TWIST DRILL BIT SET



**Model No.** BI5142

**Specification**  
1.5mm - 6.5mm

1, 2, 2.5, 3, 3.2, 3.5, 4, 4.5, 4.8, 5, 5.5, 6, 6.5mm



**Model No.** BI5147

**Specification**  
1/16" - 1/4"

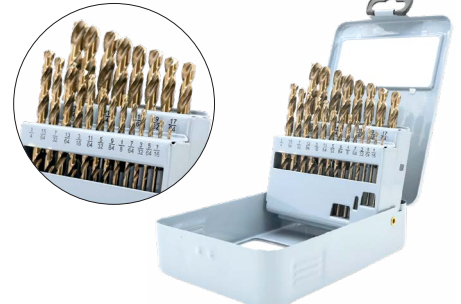
1/16", 5/64", 3/32", 7/64", 1/8", 9/64", 5/32", 11/64", 3/16", 13/64", 7/32", 15/64", 1/4"



**Model No.** BI5145

**Specification**  
1mm - 10mm

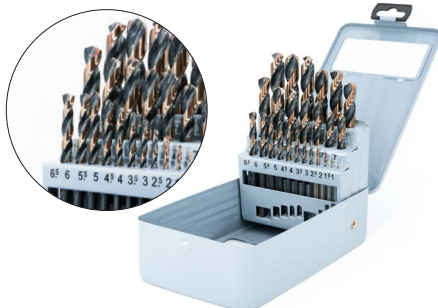
1, 1.5, 2, 2.5, 3, 3.5, 4, 4.5, 5, 5.5, 6, 6.5, 7, 7.5, 8, 8.5, 9, 9.5, 10mm



**Model No.** BI5148

**Specification**  
1/16" - 3/8"

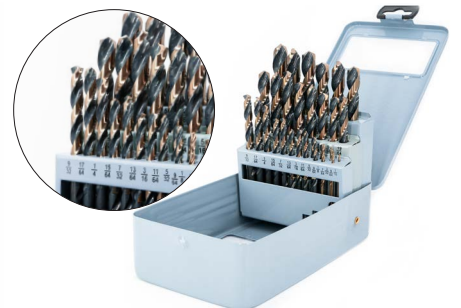
1/16", 5/64", 3/32", 7/64", 1/8", 9/64", 5/32", 11/64", 3/16", 13/64", 7/32", 15/64", 1/4", 17/64", 9/32", 19/64", 5/16", 21/64", 11/32", 23/64", 3/8"



**Model No.** BI5143

**Specification**  
1mm - 13mm

1, 1.5, 2, 2.5, 3, 3.5, 4, 4.5, 5, 5.5, 6, 6.5, 7, 7.5, 8, 8.5, 9, 9.5, 10, 10.5, 11, 11.5, 12, 12.5, 13mm



**Model No.** BI5144

**Specification**  
1/16" - 1/2"

1/16", 5/64", 3/32", 7/64", 1/8", 9/64", 5/32", 11/64", 3/16", 13/64", 7/32", 15/64", 1/4", 17/64", 9/32", 19/64", 5/16", 21/64", 11/32", 3/64", 3/8", 25/64", 13/32", 7/64", 7/16", 29/64", 15/32", 1/64", 1/2"

## Compatible with Below Platform's Battery



Beiter



Mujingfang



WORX



MAKITA



Devon

## Beiter LED Work Light



Model	P-LED-430	P-LED-548	P-LED-759	P-LED-884
Power	48W	48W	90W	90W
Voltage	20V	20V	20V	20V
Lumen	1500LM	2400LM	2950LM	4200LM
LED Chips	30	48	59	84
USB Port	Optional 5V 2A Output x 2 ports	Optional 5V 2A Output x 2 ports	Optional 5V 2A Output x 2 ports	Optional 5V 2A Output x 2 ports
Net Weight (without battery)	350g	460g	560g	525g



- Compatible With A Wide Range of Brand Platforms.
- Battery not included.

## Handheld Flashlight

Model	P-LED-H4
Power	12W
Voltage	20V
Lumen	1120LM
LED QTY	4



- Compatible With A Wide Range of Brand Platforms.
- Battery not included.

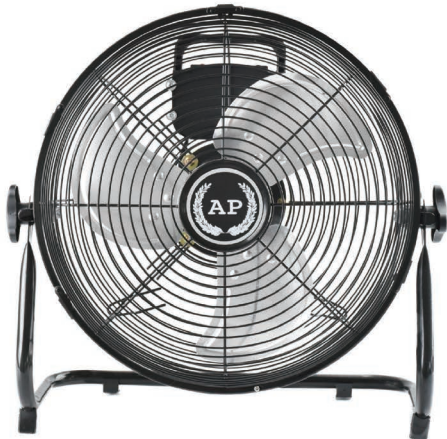
## 72W Li-ion Soldering Iron

Model	P-IS
Power Rating	72W
Heating Temperature	150°C - 480°C



- Compatible With A Wide Range of Brand Platforms.
- Battery not included.

## 12"AC/DC External Battery Type Portable Fan



### Features :

- ON/OFF Switch with 3-Speed Settings  
Low / 1200Rpm / 12W  
Middle / 1300Rpm / 14W  
Fast / 1400Rpm / 15W
- Raised by 90 degrees, Lowered by 3 degrees  
The air supply range is about 70 degrees
- Operating hours on a fully charged 4.0Ah battery is 5~7 hours \*
- AC powered rated voltage  
100V-240V ~ 50/60HZ

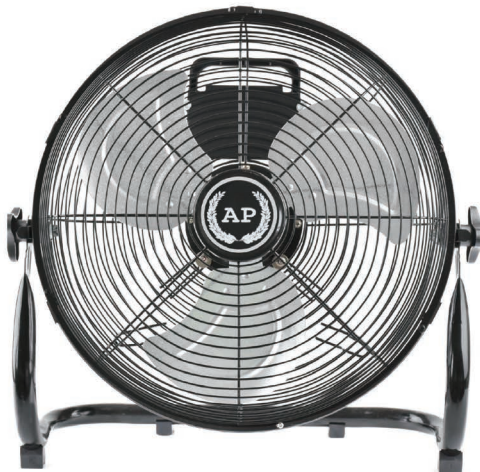


### Compatible with below Platform's Battery



\* The laboratory test data for reference only

## 14"AC/DC External Battery Type Portable Fan



### Features :

- ON/OFF Switch with 3-Speed Settings  
Low / 1150Rpm / 13W  
Middle / 1250Rpm / 20W  
Fast / 1350Rpm / 24W
- Raised by 90 degrees, Lowered by 3 degrees  
The air supply range is about 70 degrees
- Operating hours on a fully charged 4.0Ah battery is 5~7 hours \*
- AC powered rated voltage  
100V-240V ~ 50/60HZ

### Other Models



### Compatible with below Platform's Battery



\* The laboratory test data for reference only





### BT-BN900

Caulking Guns



### BT-8360

Pneumatic Glue Gun



### BT1013/BT1016/BT1019

Water Gun Nozzle

Size: 13mm 16mm 19mm



### BT-8109

Blind Riveting Pliers



### BT-00924

LED Head Light

Power Supply	3*AAA
Working Time	7 hours
Adjustable Angle	45°
Light Color	White
Lumen	120LM



### BT-00940

LED Li-ion Head Light

Power Supply	Lithium Battery
	3.7V 1200mAH
Working Time	4 hours
Adjustable Angle	45°
Light Color	White and Red
Luminosity	120LM



### BT-300

Beiter Drag Saw

Body Length	400mm
Blade Length	300mm



### BCART-2R

Beiter Folding Cart( Two Retractable Wheels)

Carry Weight	80 kgs
Net Weight	3 kgs
Product Size	1000x380x420mm
Folded Size	640x380x55mm
Wheels Size/Material	5" PVC



### BCART-6R

Beiter Folding Cart ( Six Retractable Wheels)

Carry Weight	80 kgs
Net Weight	4.2 kgs
Product Size	1000x380x420mm
Folded Size	640x380x55mm
Wheels	6x4" TPR

## Pneumatic Nail Guns



### F32

#### 18GA BRAD NAILER

Weight	1.25KG
Height	125mm
Length	240mm
Width	60MM
Capacity	100PCS
Operating Pressure	60-100PSI



### 1010F

#### 22GA FINE WIRE STAPLER

Weight	0.94KG
Height	145mm
Length	207mm
Width	50MM
Capacity	140PCS
Operating Pressure	60-100PSI



### P630C

#### 23GA HEADLESS PINNER

Weight	0.92KG
Height	178mm
Length	215mm
Width	42MM
Capacity	150PCS
Operating Pressure	60-100PSI



### FST50B

#### 16GA 2" BRAD NAILER

Weight	2.8KG
Height	260mm
Length	313mm
Width	90MM
Capacity	50PCS
Operating Pressure	80-120PSI



### 422J

#### 20GA FINE WIRE STAPLER

Weight	1.17KG
Height	168mm
Length	240mm
Width	58MM
Capacity	100PCS
Operating Pressure	60-100PSI



### 8016B

#### 21GA FINE WIRE STAPLER

Weight	0.95KG
Height	145MM
Length	207MM
Width	50MM
Capacity	125PCS
Operating Pressure	70-100PSI
Air Inlet	1/4"NPT



### 8016BL

#### LONG NOZZLE 21GA FINE WIRE STAPLER

Weight	1.11KG
Height	210MM
Length	207MM
Width	50MM
Capacity	125PCS
Operating Pressure	70-100PSI
Air Inlet	1/4"NPT



## BEITER Professional Manual Tile Cutters



The MD-Series features a full-length one-piece die-cast aluminum base for absolute stability and precision. BEITER MD-Series tile cutters are ideal for the intensive cutting of ceramic tiles, especially for frequent cutting of ceramic tiles. Cutting length range from 400mm to 700mm, respectively equipped with single or double solid steel rails to achieve best performance for the money.

### MD-Series Versatile Professional Tile Cutters

Model #	Features	Cutting length	Unit Weight
MD440-2	Straight handle/ Double Rails	400mm (16in)	5.9KG
MD640-2	Curve ergonomic handle/ Double Rails	600mm (24in)	9.0KG



MD640-2

## MA-Series Industrial Grade Tile Cutters

The MA-Series is made for large-scale heavy-duty serious projects. BEITER MA-Series tile cutters feature robust design to handle premium tile cutting. Impressive cutting length ranges from 600mm up to 1600mm, with supporting arms. Diagonal cut makes easy. Laser guide are optional as an upgrade.

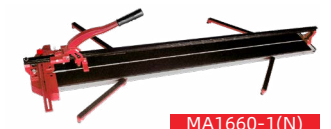
Model #	Features	Cutting length	Unit Weight	Diagonal Cut	Laser guide
MD680B-1(N)K	Die-cast/ Curve ergonomic handle/ Single "H" Solid Rail/ supporting arms	600mm (24in)	9.0KG	✓	Optional
MA660-1(N)	Curve ergonomic handle/ Single "H" Solid Rail/ supporting arms	600mm (24in)	8.5KG	✓	Optional
MA860-1(N)	Curve ergonomic handle/ Single "H" Solid Rail/ supporting arms	800mm (32in)	11.7KG	✓	Optional
MA960-1(N)	Curve ergonomic handle/ Single "H" Solid Rail/ supporting arms	900mm (36in)	12.8KG	✓	Optional
MA1060-1(N)	Curve ergonomic handle/ Single "H" Solid Rail/ supporting arms	1000mm (40in)	13.6KG	✓	Optional
MA1260-1(N)	Curve ergonomic handle/ Single "H" Solid Rail/ supporting arms	1200mm (48in)	15KG	✓	Optional
MA1660-1(N)	Curve ergonomic handle/ Single "H" Solid Rail/ supporting arms x 2pairs	1600mm (63in)	19KG	✓	Optional



MD680B-1(N)K



MA860-1(N)



MA1660-1(N)

## TH-Series Light-weight Everyday Tile Cutters

The new TH-Series features a slim aluminum body for modern household renovation use. BEITER TH-Series tile cutters are ideal for light projects in smaller areas. Its compact size is easy for storage and transportation. Cutting length range from 300mm to 600mm. A nice nylon bag can be added as upgrade

Model #	Features	Cutting length	Unit Weight	Nylon Bag
MA300-2TH	Straight handle/ Double Rails	300mm (12in)	4.4KG	
MA600-1TH	Straight handle/ Single "H" Solid Rail	600mm (24in)	7KG	Optional
MA600-2TH(N)	Straight handle/ Double Rails/ Supporting arms	600mm (24in)	8KG	Optional
XMA600-2(N)	Die-cast base/ Super slim body/ Super light-weight/ Supporting arms	600mm (24in)	6KG	Optional



MA300-2TH



MA600-1TH



XMA600-2(N)

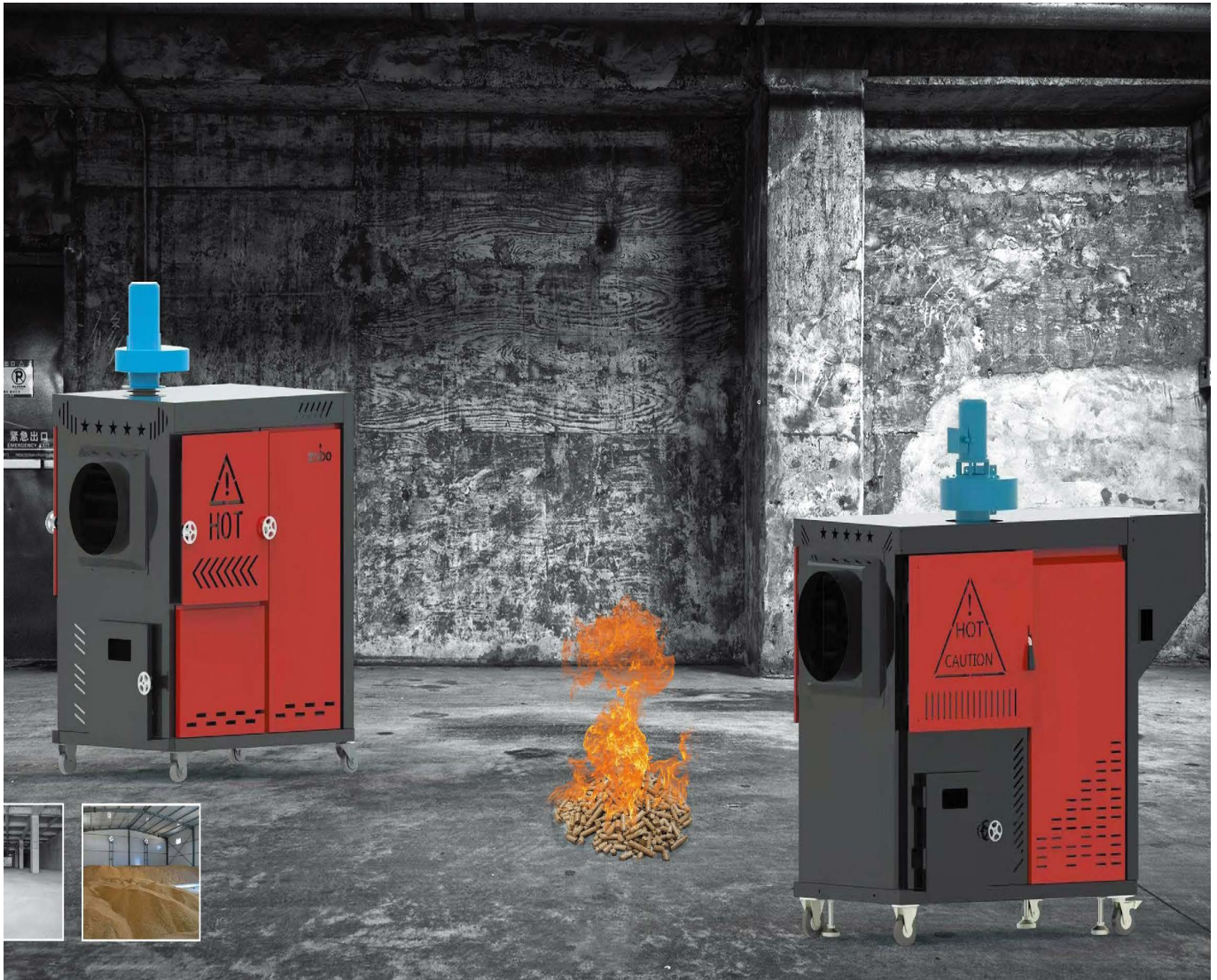
## Cutting Wheel

### MD.A-215

Replaceable tungsten-alloy cutting wheel from Japan



# AIR FORCED HEATERS



Direct diesel



Gas



Electrical



- Large Capacity Tank, Long Battery Life



- Built-in Flame Monitoring, and Over Heating Protection

- Set Start/ Stop Time
- Set Temperature at Stat/ Stop Time

## BPLUS-K50/K80/K105/K135/K180/K220

Model	BPLUS-K50	BPLUS-K80	BPLUS-K105	BPLUS-K105	BPLUS-K180	BPLUS-K220
Voltage	220V-50Hz	220V-50Hz	220V-50Hz	220V-50Hz	220V-50Hz	220V-50Hz
Heating Output	15KW	25KW	35KW	45KW	55KW	65KW
Fuel	Kerosene, Diesel	Kerosene, Diesel	Kerosene, Diesel	Kerosene, Diesel	Kerosene, Diesel	Kerosene, Diesel
Fuel Tank	196L	19L	38L	38L	50L	50L
Fuel consumption	1.4L/h	1.9L/h	2.9L/h	3.8L/h	4.8L/h	5.8L/h
Heating Area	300m <sup>3</sup>	400m <sup>3</sup>	600m <sup>3</sup>	800m <sup>3</sup>	1060m <sup>3</sup>	1300m <sup>3</sup>
Product Size	776*290*446mm	776*290*446mm	935*514*702mm	935*514*702mm	1119*576*711mm	1119*576*711mm
Net/Gross Weight	14.5/16.6kg	14.5/16.6kg	22.8/25.6kg	22.9/25.8kg	26.2/29.2kg	26.21/29.36kg
Packing Size	815*345*485mm	815*345*485mm	920*430*535mm	920*430*535mm	1075*470*535mm	1075*470*535mm
Loading Quantity (20/40/40HQ)	206/392/490pcs	206/392/490pcs	125/254/310pcs	125/254/310pcs	100/200/245pcs	100/200/245pcs
Ignition type	Continuous spark Ignition	Continuous spark Ignition	Continuous spark Ignition	Continuous spark Ignition	Continuous spark Ignition	Continuous spark Ignition
Thermostat control	without	with	with	with	with	with



**COMMERCIAL/ INDUSTRIAL WORKSHOP HEATING**

# ELECTRIC HEATER SERIES

Industrial grade design, sturdy and durable structure

Reinforced push rod, more convenient and firm to move

Mechanical knob temperature adjustment

Finned heating tube, high heating efficiency

Whirlpool air duct, strong wind, Longer air supply distance

Built-in thermostat



## BH-EC15/EC30

Model	BH-EC15	BH-EC30
Voltage	380V-50Hz	380V-50Hz
Heating Output	100/15kW	700//15kW/30kW
Air flow	1292m <sup>3</sup> /h	1980m <sup>3</sup> /h
Heating Area	300m <sup>3</sup>	600m <sup>3</sup>
Noise	61(dB)	60(dB)
Heating Element	Finned Heating Pipe	Finned Heating Pipe
Product Size	645*484*697mm	800*535*697mm
Net/ Gross Weight	20.1/21.5kg	28.2/29.7kg
Packing Size	610*400*490mm	690*450*530mm
Loading Quantity (20/40/40HQ)	230/450/570pcs	170/325/415pcs



- Smokeless , no oxygen consumption,suitable for multi-scene heating.
- Got levels of temperature adjustment. Energy saving.
- Automatic power off when overheating.
- Insulated anti-scalding metal shell.
- Angle of the air outlet can be adjusted from 15° to 25° up and down.
- Heat insulation handle, front and rear protective net cover.
- Special natural windshield for natural wind in summer.



380V industrial plug

## BH-EY3/EY5/EY9/EY15/EY30

Model	BH-EY3	BH-EY5	BH-EY9	BH-EY15	BH-EY30
Voltage	220V-50Hz	220V-50Hz; 380V-50Hz	380V-50Hz	380V-50Hz	380V-50Hz
Heating Output	30/2500/5000W	30/2500/5000W	52/4500/9000W	95W/5kW/10kW/15kW	70W/15kW/30kW
Air flow	320m <sup>3</sup> /h	320m <sup>3</sup> /h	410m <sup>3</sup> /h	1292m <sup>3</sup> /h	1980m <sup>3</sup> /h
Heating Area	100m <sup>3</sup>	100m <sup>3</sup>	180m <sup>3</sup>	300m <sup>3</sup>	600m <sup>3</sup>
Noise	52(dB)	58(dB)	53(dB)	61(dB)	70(dB)
Heating Element	Stainless steel Heating Pipe	Stainless steel Heating Pipe	Stainless steel Heating Pipe	Stainless steel Heating Pipe	Stainless steel Heating Pipe
Product Size	340*310*410mm	340*310*410mm	430*410*520mm	490*490*860mm	571*542*850mm
Net/Gross Weight	7.3/8.1kg	7.3/8.1kg	11.4/12.2kg	21.6/22.5kg	31/33kg
Packing Size	381*340*425mm	381*340*425mm	426*411*515mm	475*450*560mm	525*535*640mm
Loading Quantity (20/40/40HQ)	5200/1000/1230pcs	520/1000/1230pcs	310/600/755pcs	230/450/568pcs	160/300/380pcs



**HOME USE HEATING**  
Electric Fan Heater



## BH-EC3/EC5/EC9 & BH-ET2C/ET3C

Model	BH-EC3	BH-EC5	BH-EC9	BH-ET2C	BH-ET3C
Voltage	220V-50Hz	220V-50Hz; 380V-50Hz	380V-50Hz	220V-50Hz	220V-50Hz
Heating Output	23/3000W	29/5000W	57/9000W	200/2000W	23/1500/3000W
Air flow	365m <sup>3</sup> /h	320m <sup>3</sup> /h	410m <sup>3</sup> /h	250m <sup>3</sup> /h	365m <sup>3</sup> /h
Heating Area	60m <sup>3</sup>	100m <sup>3</sup>	180m <sup>3</sup>	40m <sup>3</sup>	60m <sup>3</sup>
Noise	45(dB)	48(dB)	53(dB)	45(dB)	45(dB)
Heating Element	Finned Heating Pipe	Finned Heating Pipe	Finned Heating Pipe	PTC ceramic heating element	PTC ceramic heating element
Product Size	211*229*326mm	360*319*445mm	360*319*445mm	218*140*250mm	275*175*318mm
Net/Gross Weight	6.5/7.2kg	9.5/10.4kg	10.2/11.1kg	1.7/1.9kg	2.6/3.1kg
Packing Size	260*250*360mm	390*325*410mm	390*325*410mm	225*150*260mm	300*205*340mm
Loading Quantity (20/40/40HQ)	1200/2300/2900pcs	530/1050/1300pcs	530/1050/1300pcs	3200/6100/7750pcs	1350/2600/3250pcs



## MARINE & AUTO ENGINEERING

Smooth sailing with BEITER tools solutions - save time and money

Cars, motorbike, tankers, yachts, ferries, leisure boat, water toys, work boats, tugs and jackup rigs... since 2019 more than 100 auto shops, barges and shipyards have been equipped with BEITER tools solutions and toolsets that support a neat and tidy workplace. A matter of time and security, BEITER tools solution give you a quick and easy overview that saves valuable time: We provide a wide selection of heavy duty cases and cabinet for storage and transport. All tools have their own, fixed place, so it's easy to find the tool needed, put it back in its respective place - and see if any is missing.



### High Quality Brand Lock

#### Hardware accessories

Lock plate thickening treatment, more effective protection. Thicker key, not easy to break, rust



### Bulkhead and Hook

#### Diaphragm and hook

With the use of baffle and hook, the height of plate layer can be adjusted at will, the load bearing can be increased, the plate is not easy to deform, convenient and flexible. Hooks can be used separately according to different tools. (Contact customer service for detailed hook requirements)





## Hanging Tool Cabinet



One Door

Two Door

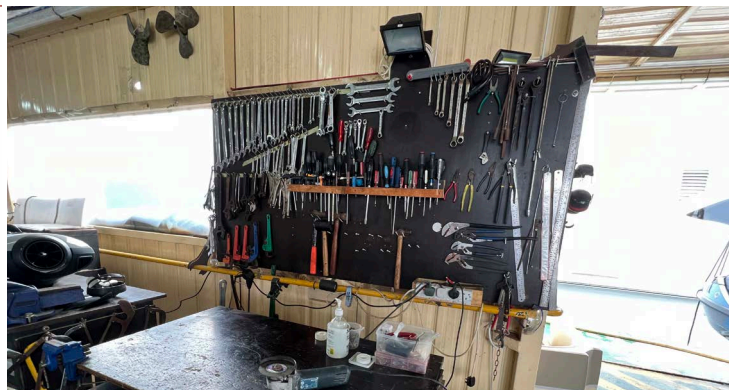


	L(mm)	W(mm)	H(mm)
One Door	400	200	600
Two Door	800	200	600
One Door Two Door	1200	200	600

Pumpman and carpenter



Tool cabinet for pumpman and carpenter w/o tools, LM Art. no. 9892/00029



## Marine Specialized Tools

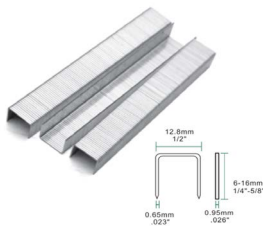


### 21GA FINE WIRE STAPLER

8016B	
Weight	0.95KG
Height	145MM
Length	207MM
Width	50MM
Capacity	125PCS
Operating Pressure	70-100PSI
Air Inlet	1/4"NPT

### LONG NOZZLE 21GA FINE WIRE STAPLER

8016BL	
Weight	1.11KG
Height	210MM
Length	207MM
Width	50MM
Capacity	125PCS
Operating Pressure	70-100PSI
Air Inlet	1/4"NPT



### STAPLE SPECIFICATIONS

MODEL	SIZE	FINISH	BOX/QTY	BOX/CTN
8006	1/4"(6mm)	Galvanized	10000	20
8008	5/15"(8mm)	Galvanized	10000	20
8010	3/8"(10mm)	Galvanized	10000	10
8012	1/2"(12mm)	Galvanized	10000	10
8014	9/16"(14mm)	Galvanized	10000	10
8016	5/8"(16mm)	Galvanized	10000	10

## Light-weight Brushless Power Tools



### BT430-16V



### BT432-16V



### Accessories



### C16-4B1 16V Brushless POWER COMBO KIT

Item No.	BT430-16V BL	BT432-16V BL
Rated Voltage	16V	16V
Battery Capacity	2.0Ah	2.0Ah
No Load Speed	0-500/1500 rpm	0-500/1500 rpm
Chuck Size	10mm	10mm
Impact Rate	/	0-1100/3200 bpm
Max Torque	40 Nm	40 Nm
Torque Setting	20+1	20+1+1
Drilling Capacity	Wood 20mm/Steel 10mm	Wood 20mm/Steel 10mm/Concrete 8mm
Accessories	2x Li-ion Batteries, Charger, Tool Box	

## PORTABLE CASES

MARINE USE - IP67 Waterproof

Other Areas of Use:  
Drones, Measuring Devices, Medical Devices, Cameras,  
Equipment, Security, Electronics, Etc.



## MG9-Series

Color: Black/ Customized  
Material: PP/ ABS



Item No.	Size(LxWxH) Outer(mm)	Inner(mm)	Lid Height/ Body Height
MG9194	216*165*95	194*128*80	19/67mm
MG9195	236*180*95	215*144*87	27/60mm
MG9255	285*230*100	255*183*86	26/60mm
MG9256A	287*220*152	256*182*143	28/115mm
MG9256B	287*220*107	256*182*98	28/70mm
MG9262A	290*243*130	262*202*120	30/90mm
MG9262B	290*243*110	262*202*100	30/70mm
MG9297	327*216*155	297*178*146	27/119mm
MG9300A	346*250*136	300*200*126	30/96mm
MG9300B	346*250*110	300*200*95	30/65mm
MG9326A	363*290*160	326*246*150	31/119mm
MG9326B	363*290*136	326*246*126	31/195mm
MG9326C	363*290*114	326*246*104	31/73mm
MG9395A	430*350*190	395*295*179	41/138mm
MG9395B	430*350*150	395*295*136	41/95mm
MG9405	446*345*155	405*298*143	41/102mm
MG9595	653*450*235	595*430*217	45/172mm

## LAND USE Heavy-duty CASES - Non-waterproof

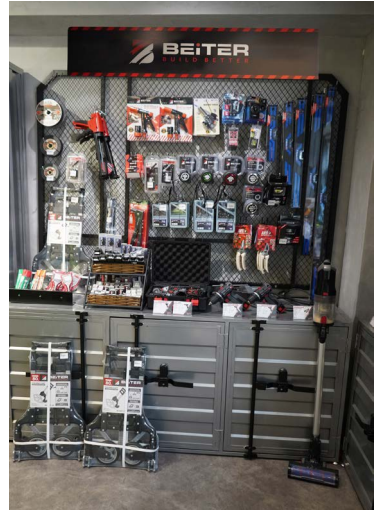
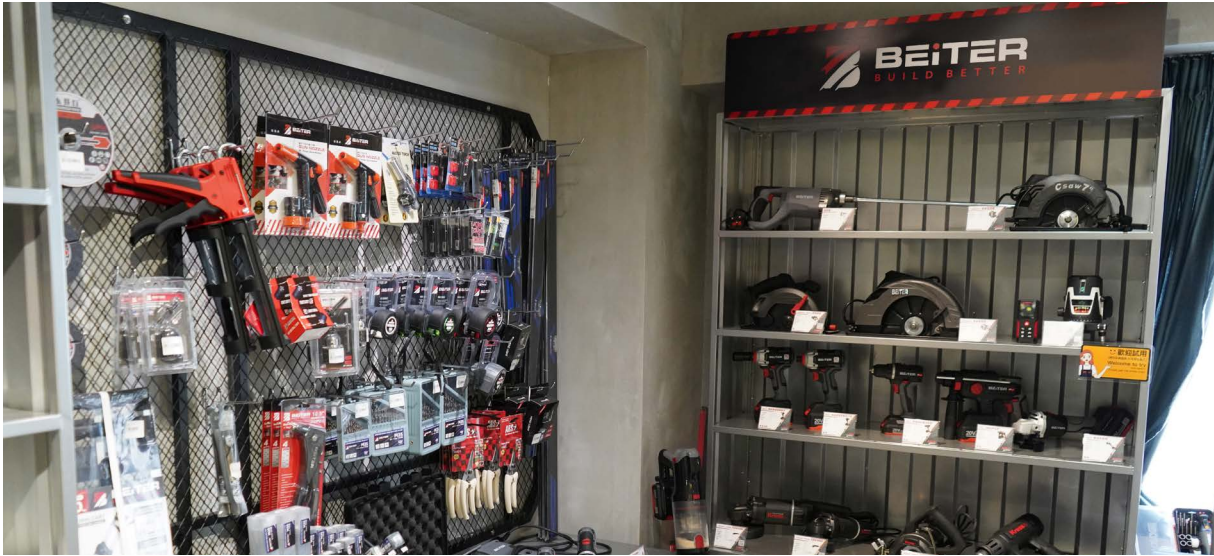


Item No.	Size(LxWxH) Outer(mm)	Inner(mm)	Lid Height/ Body Height	Material
BC4133S	460*370*146	410*325*127	2250	PP
BC4133M	460*370*206	410*325*187	2500g	PP
BC4133L	460*370*276	410*325*257	3250g	PP

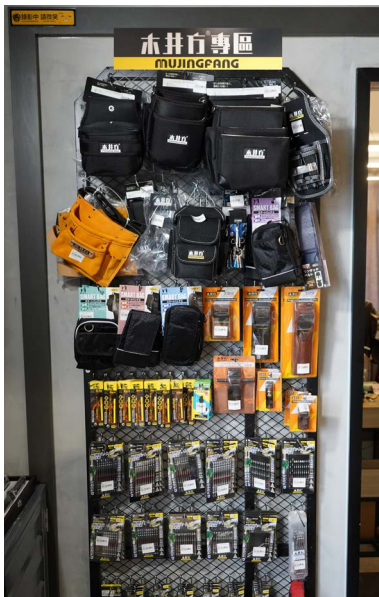
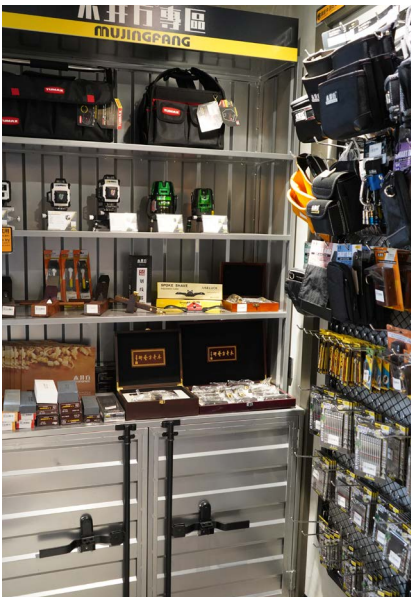
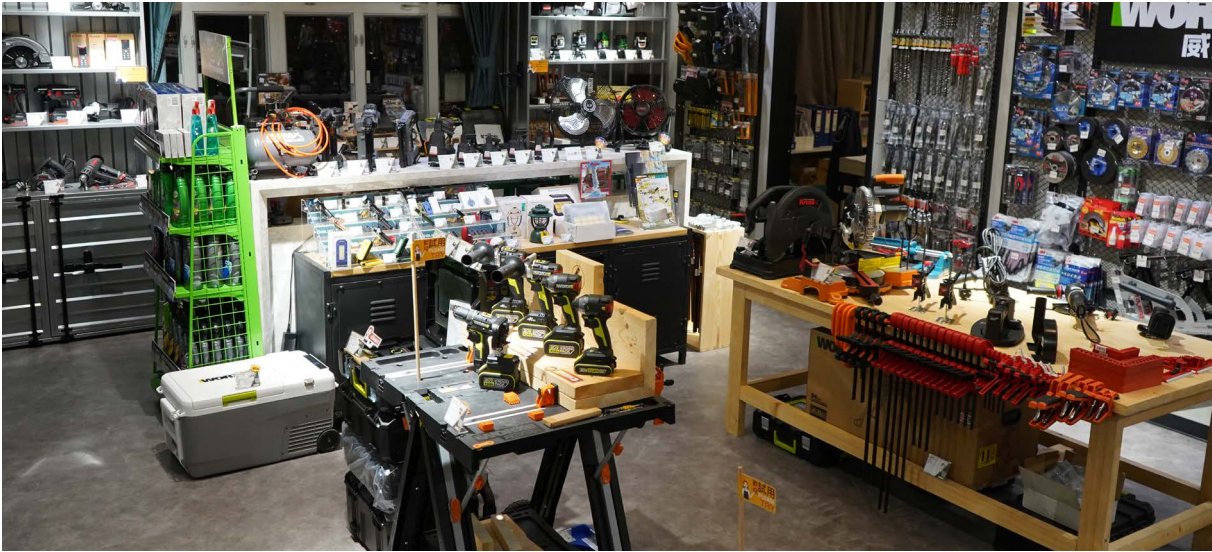




# Merchandising



# Merchandising





**BEITER**  
BUILD BETTER

## **AUTHORIZED DISTRIBUTOR**



**BEITER TECHNOLOGIES USA LLC**  
**BEITER INTERNATIONAL LIMITED**

**Wah Tat Hardware & Tools Limited**

11-13/F, Fuk Keung Industrial Building, 66-68 Tong Mei Rd, Kowloon, Hong Kong

**Woodwell Tools Manufacturing Limited**

5 Shunfu Road East, Heshun Hegui Industrial Estate B, Lishui Town,  
Nanhai District, Foshan City, Guangdong 528241, China

**Beiter Technologies USA LLC**

2309 Noriega St, San Francisco, CA94122

[www.beitertools.com](http://www.beitertools.com)

Tel: +86(757)85113370

Email: [info@beitertools.com](mailto:info@beitertools.com)

Hong Kong China United States